



SPIRIT ^{OF} THE SAINTS

VIRTUAL GALA

SATURDAY · OCTOBER 24, 2020
7:30 PM

SIGN-IN, REGISTER TO BID AND VIEW OUR VIRTUAL PROGRAM SATURDAY ONLINE AT:
saintsfoundation.org/gala

WELCOME

The Saints Foundation gala offers a front row seat in the Spirit of the Saints' virtual lounge, as we celebrate the remarkable efforts of St. Francis and St. Gertrudes as they continue to provide the best possible healthcare, right here where we live.

Featured speakers, Marianne Kanning and Elizabeth Duehr, along with St. Francis President, Amy Jerdee and Drs. Roman, Hill and Wilkowske share their unique insight as to the critical needs that are the driving force behind the expansion of the cancer center, the emergency department and increased mental health services. Host T. Mychael Rambo guides us through this incredible evening of heart, hope and healthcare... grace, glory to God and generous giving... topped off by world class vocalists that will stir your soul, as you stir your choice of signature cocktails — The Platinum Sparkle or The Executive Collins. So, join us and raise a glass to our Saints. Trust me, when they come marching in, you will want to be one of them.

SHARE YOUR PHOTOS!

Dressing up at home? If you're having a virtual party, email your pics to us at **saintsfoundation@allina.com** and we'll display them during the livestream. Tiaras and pajamas? Let your creativity fly!

Hold up a sign with a fun message or why you're donating. We'd love to see them!

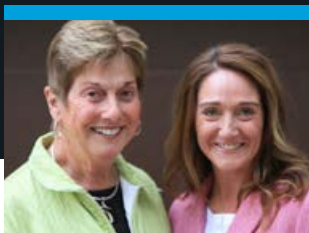


DONATE NOW ▶
SCAN USING YOUR CAMERA

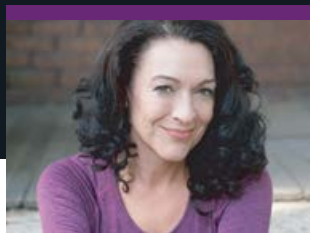




T. Mychael Rambo
VIRTUAL HOST



**Dr. Marianne Kanning
& Elizabeth Duehr**
FEATURED SPEAKERS



Jennifer Burleigh-Bentz
VOCAL PERFORMER

PREMIER AUCTION ITEMS



ITEM #100

Experience the Twin Cities aboard a LifeLink III helicopter, limo transport and 3-course meal & wine pairing at PLate in Prior Lake



ITEM #110

Individually and personally paired craft beer dinner for four at Turtle's Bar and Grill in Shakopee



ITEM #101

Minnesota Vikings experience for four in the US Bank Medtronic Club, with unlimited food and drink and on-field passes



ITEM #112

Wine and private virtual wine tasting experience with Brook Bannister from Sonoma County's Bannister Wines



ITEM #105

Kick back and enjoy some quality ice fishing at Knutson's Ice House on either Mille Lacs Lake or Red Lake.

SIGN-IN, REGISTER TO BID AND VIEW OUR VIRTUAL PROGRAM SATURDAY ONLINE AT:

saintsfoundation.org/gala



The Saints Foundation has partnered with Think and Drink Entertainment to play free virtual Rock Star Bingo – a fun combination of Name that Tune + BINGO + Sing-a-longs.

Turn your sound up and get ready to have a good time! Email saintsfoundation@allina.com to request your free cards and to receive the link to play! The game will start shortly after the conclusion of the gala livestream.





EMERGENCY DEPARTMENT

St. Francis' Emergency Department was last expanded and remodeled twenty years ago. Since 2000, Shakopee's population has doubled in size and Scott County's population has grown by 60 percent. As a result of this constant growth, we can no longer provide the patient experience or privacy that our patients deserve. As part of the \$25 million project, the Emergency Department will add 14 emergency rooms, two trauma rooms and six emergency mental health rooms. Additionally, a new drive-through ambulance garage will accommodate up to four emergency vehicles and the Emergency Department entrance will feature enhanced patient drop-off and waiting areas.



EMERGENCY MENTAL HEALTH ROOMS

As our community experiences a drastic rise in emergency mental health and addiction patients, our Emergency Department needs the resources to respond and care for these individuals as they heal. As such, the current capacity for emergency mental health patients needs to grow to accommodate multiple patients for stays of up to 24 hours, as well as upgrade to provide these patients with safe, private, dignified rooms for their care.

As part of the \$25 million expansion, emergency mental health care at St. Francis will grow from two rooms to four rooms, with the option to expand to a total of six, when necessary. All rooms will have access to secure nutrition stations and showers, and will be securely monitored 24/7 for patient and staff safety.



CANCER CENTER

As part of the \$25 million expansion, St. Francis is also expanding its Cancer Center by renovating existing hospital space to grow the number of medical oncology exam rooms from four to eight, and by remodeling and expanding the footprint of the current infusion area. This will allow us to provide safe, compassionate and healing care to more patients with cancer in Scott and Carver counties.

THANK YOU SPONSORS

PRESENTING SPONSORS



SHAKOPEE MDEWAKANTON
SIOUX COMMUNITY



Suburban Emergency
Associates, P.A.
When Quality Makes a Difference™

GOLD SPONSORS



SILVER SPONSORS



BRONZE SPONSORS



Dr. Marianne Kanning



SUPPORTING SPONSORS



Stephanie & David Forbes



DONATE NOW ▶
SCAN USING YOUR CAMERA

